

FIRST FRONTIER GUIDEBOOK

FIRST FRONTIER HISTORY AUDIO DRIVING TOUR

This driving tour is a 220-mile self-guided journey through the historic mountain frontier of colonial America. Start at any Passport Pitstop and drive to the next Pitstop. Stamp your Passport at each Pitstop! Guidebook shows all overnight accommodations.

You will travel over ancient buffalo traces and Native American trails that frontier settlers cut into roads seeking the fertile lands of Kentucky and walk through Cumberland Gap, where the Wilderness Road and the Warrior's Path meet and look out upon America's First Frontier.



AUDIO INFO - Learn more about the artists & get a free copy of the tour at FIRSTFRONTIER.ORG

- 5 Passport Pit-Stop
- 84 Miles from Start
- 25E Wilderness Road Heritage Highway
- 119 Kingdom Come Scenic Parkway
- Historic Courthouse Square
- Mountain Top Scenic View



MIDDLESBORO IS LOCATED IN THE BASIN OF AN ANCIENT METEORITE IMPACT.

- ### Overnight Lodging
- A** Best Western Inn (606) 248-5630
 - B** Grape Vine Inn Bed & Breakfast (606) 248-9249
 - C** Ridge Runner Bed & Breakfast (606) 248-4299
 - D** Parkview Motel (606) 248-4516
 - E** Boone Trail Motel (606) 248-1340
 - F** Holiday Inn Express (606) 248-6860
 - A** Cumberland Gap NHP (606) 248-2417 - Developed Campground



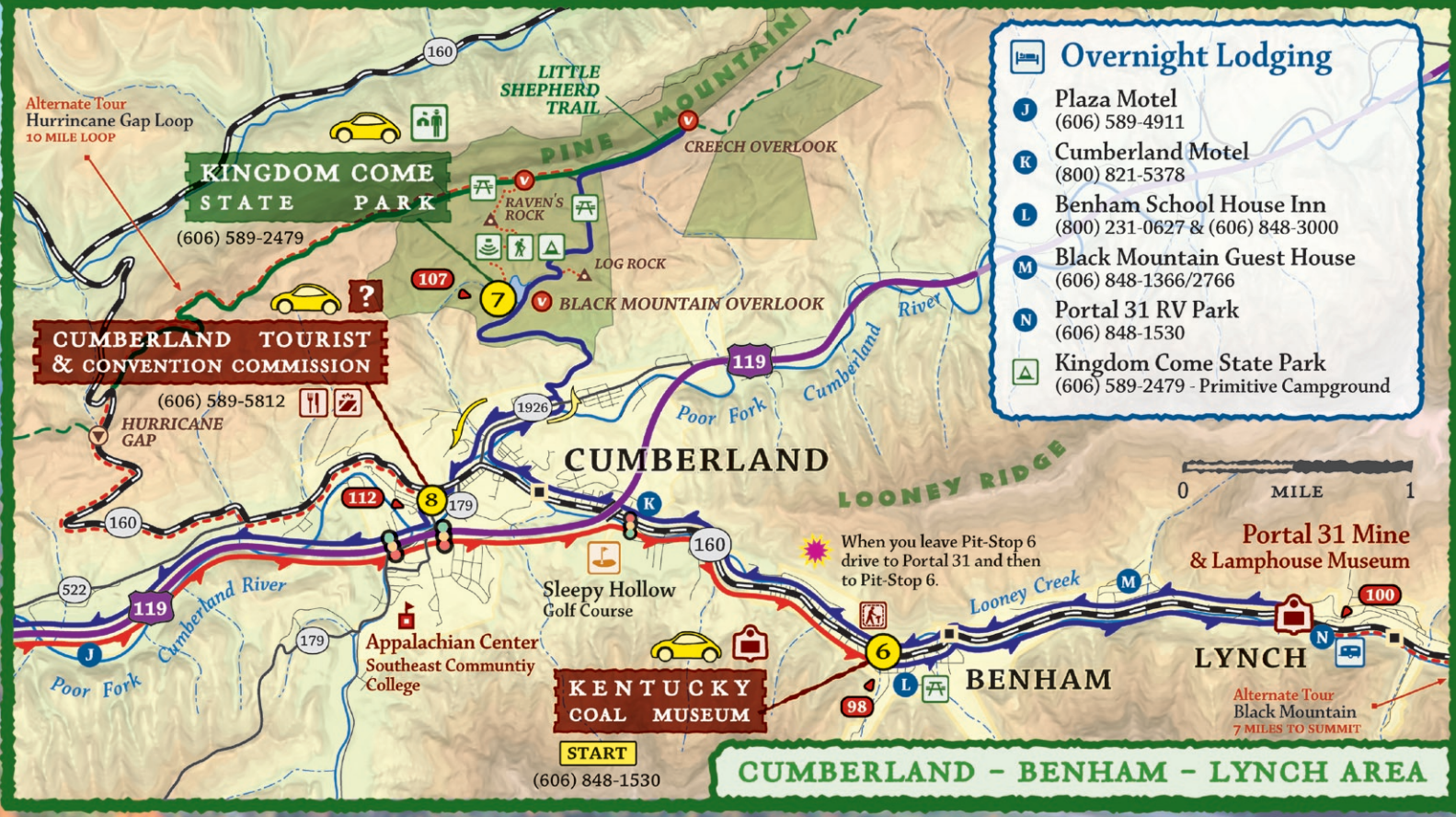
MIDDLESBORO & CUMBERLAND GAP AREA

INSTRUCTIONS

- 1 Plan a 2-Day Tour**
This driving tour is 220 miles long with over 100 miles of side driving and hiking trails. Give yourself enough time to explore the many scenic and historic destinations in the First Frontier. This guidebook shows all overnight accommodations.
- 2 Visit each Pit-Stop**
Start at Passport Pit-Stop ① the Cumberland Gap Visitor Center. You can start at a different Passport Pit-Stop, just follow the yellow arrows to the next Pit-Stop. Drive through each of the red mile markers and get your Passport stamped!
- 3 Return Tour Package**
We loan this tour package to you based on the honor system. You may keep the Passport as a souvenir, but please return everything else to a Pit-Stop when you have finished touring. Please visit FirstFrontier.org to download your free tour!

DRIVING TOUR AUDIO TIMELINE





- ### Overnight Lodging
- J** Plaza Motel (606) 589-4911
 - K** Cumberland Motel (800) 821-5378
 - L** Benham School House Inn (800) 231-0627 & (606) 848-3000
 - M** Black Mountain Guest House (606) 848-1366/2766
 - N** Portal 31 RV Park (606) 848-1530
 - A** Kingdom Come State Park (606) 589-2479 - Primitive Campground

SYMBOLS & LEGEND

- | | | | |
|---|----------------------------------|--------------------------|---------------------------|
| Tourist & Guide Service Info | Park Visitor Center | Mountain Biking Trails | US Highway 4-Lane |
| Historic Courthouse Square | Developed Picnicking Facilities | Equestrian Trails | US Highway 2-Lane |
| Historical Site or Museum | Outdoor Amphitheater | ATV Permitted Areas | State Primary Road |
| Restaurant Information | Hiking Trails | Rugged Backwoods Area | State Secondary Road |
| Gift Shopping Information | Public Golf Course | Hunting under State Laws | Little Shepherd Trail |
| Regional Airport | Primitive or Group Camping | Fishing under State Laws | County or Local Road |
| Interpretive Walking Trail | RV Park with Hook-ups | Swimming Pool or Beach | Hiking Trail |
| Passport Pit-Stop & Tour Package drop-off | Hotel, Motel, or Bed & Breakfast | Developed Playground | Driving Tour Audio Disk 1 |
| Direction of Driving | Summit or Geological Area | Dam | Driving Tour Audio Disk 2 |
| Traffic Light along Tour | Gap or Pass | Boating under State Law | Alternate Tour |
| Miles of Driving along Tour | Scenic Vista | College or University | |

93 Miles Driving along Tour



WILDERNESS ROAD HERITAGE HIGHWAY TOUR

Overnight Lodging in the Pineville & Barbourville Area

- P** Pine Mountain Lodge & Cottages (606) 337-3066 and (800) 325-1712
- Q** Best Western Wilderness Trail Inn (606) 546-8500 and (800) 528-1234
- R** Town Square Place Bed & Breakfast (606) 545-7256
- S** Appletree Inn Bed & Breakfast (606) 546-5328
- S** College Motel (606) 546-3668
- S** Antiques and Accents Bed & Breakfast (606) 526-0646



BARBOURVILLE AREA

Union College
Barbourville Water Park
Knox County Courthouse Square
Knox Historical Museum
Cumberland River

PINE MOUNTAIN STATE RESORT PARK

PINEVILLE AREA

Bell County Courthouse Square
Wasioto Winds Golf Course
Clear Creek Baptist Bible College
Pine Mountain State Resort Park

THE WILDERNESS ROAD
The Wilderness Road is designated a National Scenic Byway north of Cumberland Gap on 25E & 29N



KENTUCKY COMMUNITIES CRAFTS VILLAGE

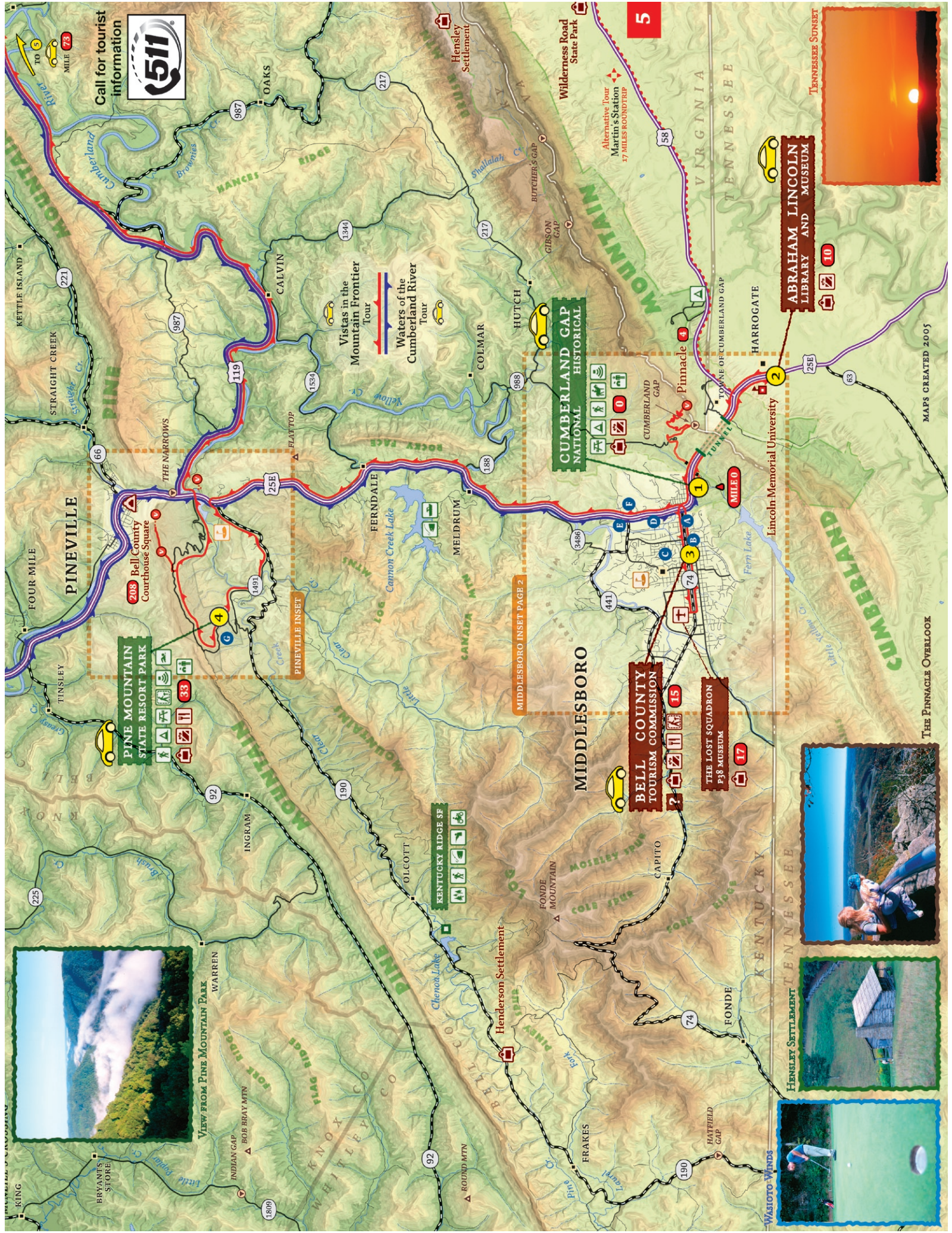
KENTUCKY COMMUNITIES CRAFTS VILLAGE

BARBOURVILLE

BARBOURVILLE

Union College
Knox County Courthouse Square
Dr. Thomas Walker State Historic Park

Wilderness Road Heritage Highway



Call for tourist information
511

TO
 MILE 73

WILDERNESS ROAD STATE PARK

Alternative tour
 Martin's Station
 17 MILES ROUNDTRIP

5

ABRAHAM LINCOLN
 LIBRARY AND MUSEUM

10

25E

63

MAPS CREATED 2005

THE PINNACLE OVERLOOK

WASHTO WINDS

HENSLEY SETTLEMENT

INDIAN GAP

BOB BRAY MTN

WARREN

VIEW FROM PINE MOUNTAIN PARK

33

208

BELL COUNTY COURTHOUSE SQUARE

THE NARROWS

66

221

KETTLE ISLAND

STRAIGHT CREEK

SYNOPSIS Cr.

PINE MOUNTAIN STATE RESORT PARK

11

119

987

1344

CALVIN

OAKS

217

Hensley Settlement

WILDERNESS ROAD STATE PARK

10

217

BUTCHER'S GAP

GIBSON GAP

58

ABRAHAM LINCOLN LIBRARY AND MUSEUM

10

25E

63

MAPS CREATED 2005

THE PINNACLE OVERLOOK

WASHTO WINDS

HENSLEY SETTLEMENT

INDIAN GAP

BOB BRAY MTN

WARREN

VIEW FROM PINE MOUNTAIN PARK

33

208

BELL COUNTY COURTHOUSE SQUARE

THE NARROWS

66

221

KETTLE ISLAND

STRAIGHT CREEK

SYNOPSIS Cr.

PINE MOUNTAIN STATE RESORT PARK

11

119

987

1344

CALVIN

OAKS

217

Hensley Settlement

WILDERNESS ROAD STATE PARK

10

217

BUTCHER'S GAP

GIBSON GAP

58

ABRAHAM LINCOLN LIBRARY AND MUSEUM

10

25E

63

MAPS CREATED 2005

THE PINNACLE OVERLOOK

WASHTO WINDS

HENSLEY SETTLEMENT

INDIAN GAP

BOB BRAY MTN

WARREN

VIEW FROM PINE MOUNTAIN PARK

33

208

BELL COUNTY COURTHOUSE SQUARE

THE NARROWS

66

221

KETTLE ISLAND

STRAIGHT CREEK

SYNOPSIS Cr.

PINE MOUNTAIN STATE RESORT PARK

11

119

987

1344

CALVIN

OAKS

217

Hensley Settlement

WILDERNESS ROAD STATE PARK

10

217

BUTCHER'S GAP

GIBSON GAP

58

ABRAHAM LINCOLN LIBRARY AND MUSEUM

10

25E

63

MAPS CREATED 2005

THE PINNACLE OVERLOOK

WASHTO WINDS

HENSLEY SETTLEMENT

INDIAN GAP

BOB BRAY MTN

WARREN

VIEW FROM PINE MOUNTAIN PARK

33

208

BELL COUNTY COURTHOUSE SQUARE

THE NARROWS

66

221

KETTLE ISLAND

STRAIGHT CREEK

SYNOPSIS Cr.

PINE MOUNTAIN STATE RESORT PARK

11

119

987

1344

CALVIN

OAKS

217

Hensley Settlement

WILDERNESS ROAD STATE PARK

10

217

BUTCHER'S GAP

GIBSON GAP

58

ABRAHAM LINCOLN LIBRARY AND MUSEUM

10

25E

63

MAPS CREATED 2005

THE PINNACLE OVERLOOK

WASHTO WINDS

HENSLEY SETTLEMENT

INDIAN GAP

BOB BRAY MTN

WARREN

VIEW FROM PINE MOUNTAIN PARK

33

208

BELL COUNTY COURTHOUSE SQUARE

THE NARROWS

66

221

KETTLE ISLAND

STRAIGHT CREEK

SYNOPSIS Cr.

PINE MOUNTAIN STATE RESORT PARK

11

119

987

1344

CALVIN

OAKS

217

Hensley Settlement

WILDERNESS ROAD STATE PARK

10

217

BUTCHER'S GAP

GIBSON GAP

58

ABRAHAM LINCOLN LIBRARY AND MUSEUM

10

25E

63

MAPS CREATED 2005

THE PINNACLE OVERLOOK

WASHTO WINDS

HENSLEY SETTLEMENT

INDIAN GAP

BOB BRAY MTN

WARREN

VIEW FROM PINE MOUNTAIN PARK

33

208

BELL COUNTY COURTHOUSE SQUARE

THE NARROWS

66

221

KETTLE ISLAND

STRAIGHT CREEK

SYNOPSIS Cr.

PINE MOUNTAIN STATE RESORT PARK

11

119

987

1344

CALVIN

OAKS

217

Hensley Settlement

WILDERNESS ROAD STATE PARK

10

217

BUTCHER'S GAP

GIBSON GAP

58

ABRAHAM LINCOLN LIBRARY AND MUSEUM

10

25E

63

MAPS CREATED 2005

THE PINNACLE OVERLOOK

WASHTO WINDS

HENSLEY SETTLEMENT

INDIAN GAP

BOB BRAY MTN

WARREN

VIEW FROM PINE MOUNTAIN PARK

33

208

BELL COUNTY COURTHOUSE SQUARE

THE NARROWS

66

221

KETTLE ISLAND

STRAIGHT CREEK

SYNOPSIS Cr.

PINE MOUNTAIN STATE RESORT PARK

11

119

987

1344

CALVIN

OAKS

217

Hensley Settlement

WILDERNESS ROAD STATE PARK

10

217

BUTCHER'S GAP

GIBSON GAP

58

ABRAHAM LINCOLN LIBRARY AND MUSEUM

10

25E

63

MAPS CREATED 2005

THE PINNACLE OVERLOOK

WASHTO WINDS

HENSLEY SETTLEMENT

INDIAN GAP

BOB BRAY MTN

WARREN

VIEW FROM PINE MOUNTAIN PARK

33

208

BELL COUNTY COURTHOUSE SQUARE

THE NARROWS

66

221

KETTLE ISLAND

STRAIGHT CREEK

SYNOPSIS Cr.

PINE MOUNTAIN STATE RESORT PARK

11

119

987

1344

CALVIN

OAKS

217

Hensley Settlement

WILDERNESS ROAD STATE PARK

10

217

BUTCHER'S GAP

GIBSON GAP

58

ABRAHAM LINCOLN LIBRARY AND MUSEUM

10

25E

63

MAPS CREATED 2005

THE PINNACLE OVERLOOK

WASHTO WINDS

HENSLEY SETTLEMENT

INDIAN GAP

BOB BRAY MTN

WARREN

VIEW FROM PINE MOUNTAIN PARK

33

208

BELL COUNTY COURTHOUSE SQUARE

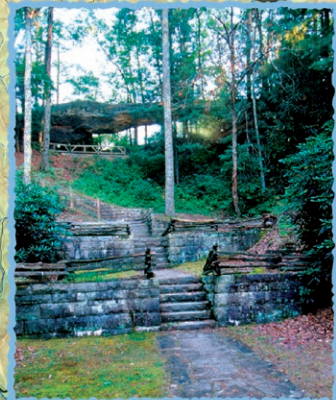
THE NARROWS

66

221

KETTLE ISLAND

KINGDOM COME SCENIC PARKWAY TOUR



LOG ROCK IN KINGDOM COME PARK

Call for tourist information



CREECH OVERLOOK IN KINGDOM COME PARK



KENTUCKY COAL MINING MUSEUM

KINGDOM COME SCENIC PARKWAY
The Parkway is designated a State Scenic Byway on 119



MARTIN'S FORK LAKE

6

← Page 5



HARLAN TOURIST & CONVENTION COMMISSION

73

MARTIN'S FORK LAKE



Harb Smith Memorial Lake

OLD WAGG TUNNEL

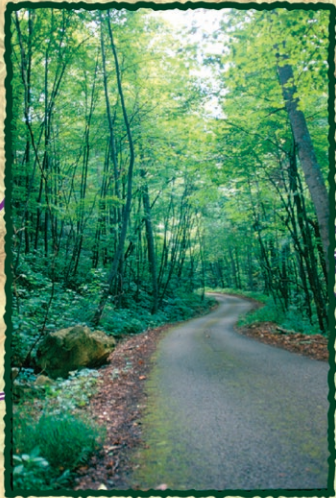


Overnight Lodging in Harlan Area

H Valley View Lodge (606) 573-2612	I Mount Aire Motel (606) 573-4660 and (800) 988-4660
T Holiday Inn Express (606) 573-3385 and (800)-HOLIDAY	A Martin's Fork (606) 573-7655 - Group Camping



BLANTON FOREST



LITTLE SHEPHERD TRAIL



HARLAN AREA



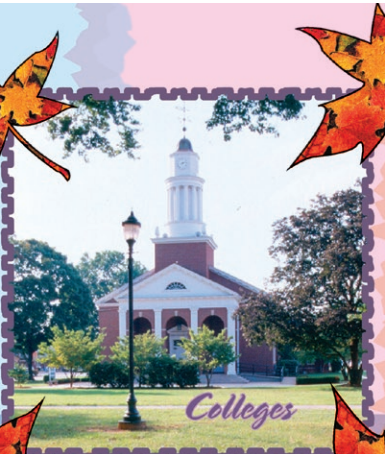
Explore

PORTAL 31



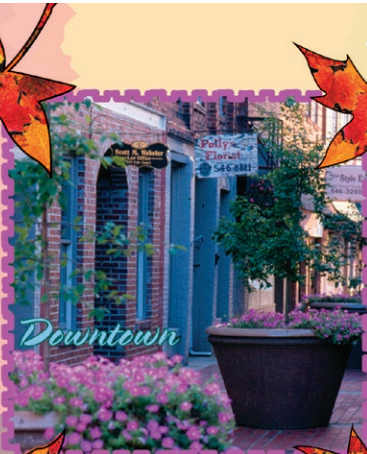
Peaceful

PINNACLE OVERLOOK



Colleges

UNION COLLEGE



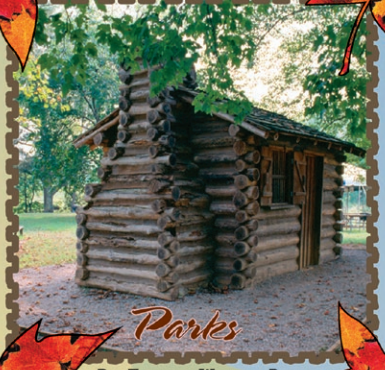
Downtown

BARBOURVILLE



Caves

GAP CAVE



Parks

DR. THOMAS WALKER PARK



Camping!

KINGDOM COME CAMPGROUND



Monuments

DANIEL BOONE MEMORIAL PARK



Refreshing

SLEEPY HOLLOW GOLF COURSE



Museums

P38 MUSEUM



Arts

KENTUCKY COMMUNITY CRAFTS VILLAGE



Overlooks

CHAINED ROCK



Rivers

CUMBERLAND RIVER



Mountains

BLACK MOUNTAIN



Golf

WASIOTO WINDS



& Crafts

KENTUCKY COAL MUSEUM

This tour is free to use, but please return to a Pitstop. To learn more and to download your free audio and maps, please visit:

FIRSTFRONTIER.ORG
a tour by *outrageGIS Mapping*

To learn more about tourism in Kentucky's Highlands & Waterways please visit our website or call toll-free:

TOURSEKY.COM
1-877-TOURSEKY



While traveling in southern and eastern Kentucky call 5-1-1 for information on attractions, dining, lodging, entertainment and festivals. You can also learn about road conditions.

This U.S. Small Business Administration (SBA) Grant No. SBAHQ-01-1-0036 is funded by the SBA. SBA's funding is not an endorsement of any products, opinions, or services. All SBA fund programs are extended to the public on a nondiscriminatory basis.